



MOUNT ALPHA

RESIDENTIAL ESTATE

A Home That Elevates Your Lifestyle



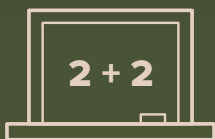


Windhoek's premier residential estate, designed for those who seek the perfect balance between modern comfort and natural serenity.

With breathtaking views, high quality finishes, and thoughtfully designed homes, this is more than just a development - it's a lifestyle.

Stay Connected to Everything You Need

Experience the perfect balance of convenience and nature at Mount Alpha, located in the picturesque suburb of Avis.



Education

Access to top-tier schools, colleges, and learning institutions just minutes away.



Dining

Indulge in upscale restaurants and cozy cafés, some with breathtaking views—all just around the corner.



Outdoor Adventure

Step into nature with scenic walking, running, and biking trails around the nearby Avis Dam.



High-Security, Gated Access

Live with peace of mind in a secure estate featuring gated entry, electric fencing, and 24/7 guardhouse monitoring.



Detached Luxury Homes

Enjoy spacious, modern living in beautifully crafted, freestanding residences.



Pet-Friendly Environment

Discover a community where pets are welcome, with open spaces and nature trails to explore together.





A Home That
Elevates Your Lifestyle



A scenic landscape featuring a body of water in the middle ground, surrounded by green hills and vegetation. In the foreground, two people are sitting on a wooden bench, looking out over the water. The sky is overcast with grey clouds. A large, faint, stylized 'M' logo is overlaid on the image.

NOW SELLING

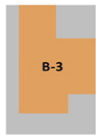
Priced at
N\$ 2,290,000 – N\$ 4,200,000



ZEPHYR

Prototype B
2 Bedroom Unit
25 Units

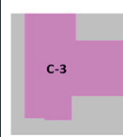
Ground floor	51.1m ²
First Floor	48.4m ²
Total	99.5m²
Garage	20.7m ²
Entertainment	17.5m ²
Grand Total	137.7m²



HERON

Prototype B
3 Bedroom Unit
45 Units

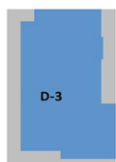
Ground floor	51.1m ²
First Floor	65.8m ²
Total	99.5m²
Garage	20.7m ²
Entertainment	17.5m ²
Grand Total	155.2m²



BLOSSOM

Prototype C
3 Bedroom Unit
3 Units

Ground floor	55.1m ²
First Floor	72.3m ²
Total	127.3m²
Garage	40.0m ²
Entertainment	19.5m ²
Grand Total	186.9m²



SOLACE

Prototype D
3 Bedroom Unit
23 Units

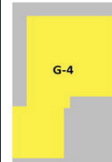
Ground floor	93.4m ²
First Floor	81.3m ²
Total	174.7m²
Garage	40.4m ²
Entertainment	24.6m ²
Stoop	15.6m ²
Grand Total	255.0m²



RETREAT

Prototype E
3 Bedroom Unit
21 Units

Ground floor	57.9m ²
First Floor	66.5m ²
Total	124.4m²
Garage	41.5m ²
Entertainment	18.7m ²
Grand Total	184.5m²



RIVERSTONE

Prototype G
4 Bedroom Unit
19 Units

Ground floor	105.9m ²
First Floor	89.6m ²
Total	195.5m²
Garage	40.4m ²
Entertainment	26.3m ²
Grand Total	262.2m²



SITE PLAN

Phase 1: 44 Units
Unit 1 - 44

Phase 2: 47 Units
Unit 45 - 91

Phase 3: 46 Units
Unit 92 - 137

TOTAL UNITS: 137



NEW LIVING
REAL ESTATE

ZEPHYR (B-TYPE) 2 BEDROOM, 2 BATHROOM

A cosy and stylish two-bedroom home-ideal for couples or small families seeking comfort and contemporary living. Well-priced to offer excellent value for investors.

FROM
N\$2,290,000



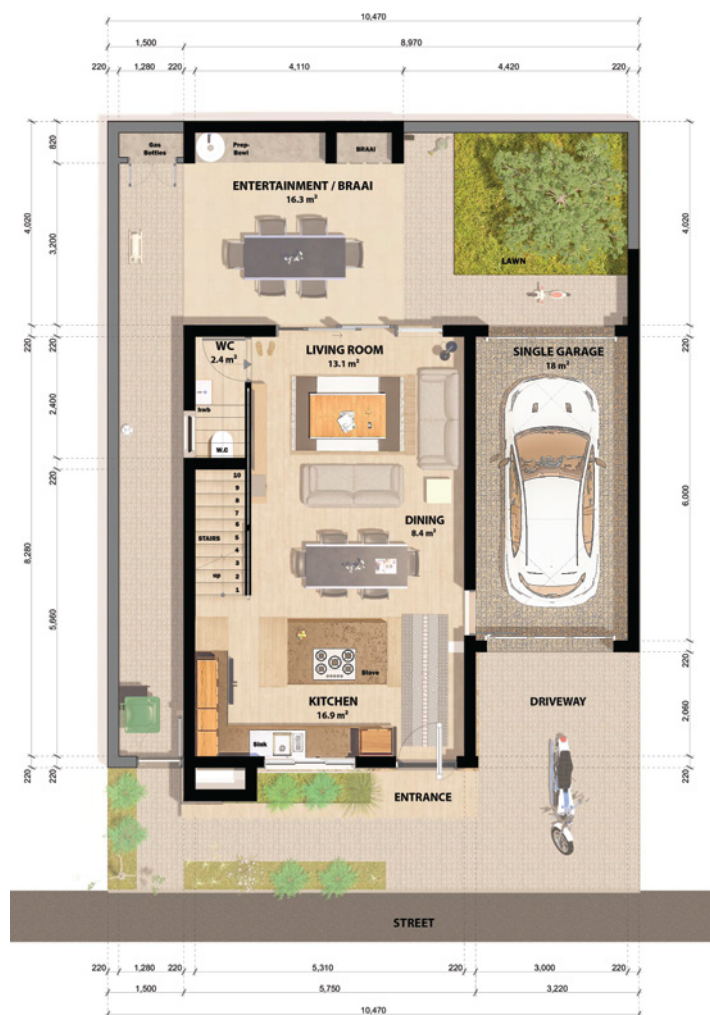
UNIT AREA CALCULATED

Ground Floor:	51.1m ²
First Floor:	48.4m ²
Garage:	22.09m ²
Entertainment:	17.59m ²
Total Footprint:	139.18m ²

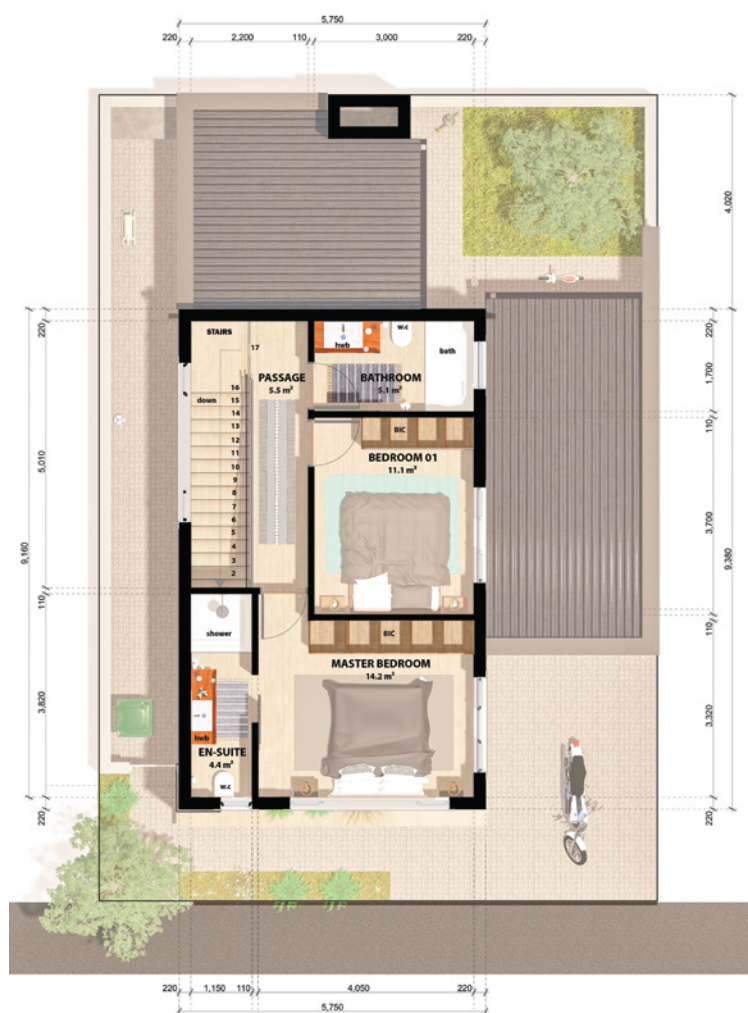
UNIT FINANCIAL INFO

Purchase Price:	N\$2,290,000
Interest Rate:	10.50%
Bond Payment (20yrs):	N\$22,863
Expected Levies:	N\$2,820

Expected Rental Income: N\$14,500



Ground Floor Plan



First Floor Plan



HERON

(B-TYPE) 3 BEDROOM, 2 BATHROOM

A spacious three-bedroom sanctuary designed for growing families, blending warmth with contemporary elegance.

FROM

N\$2,540,000



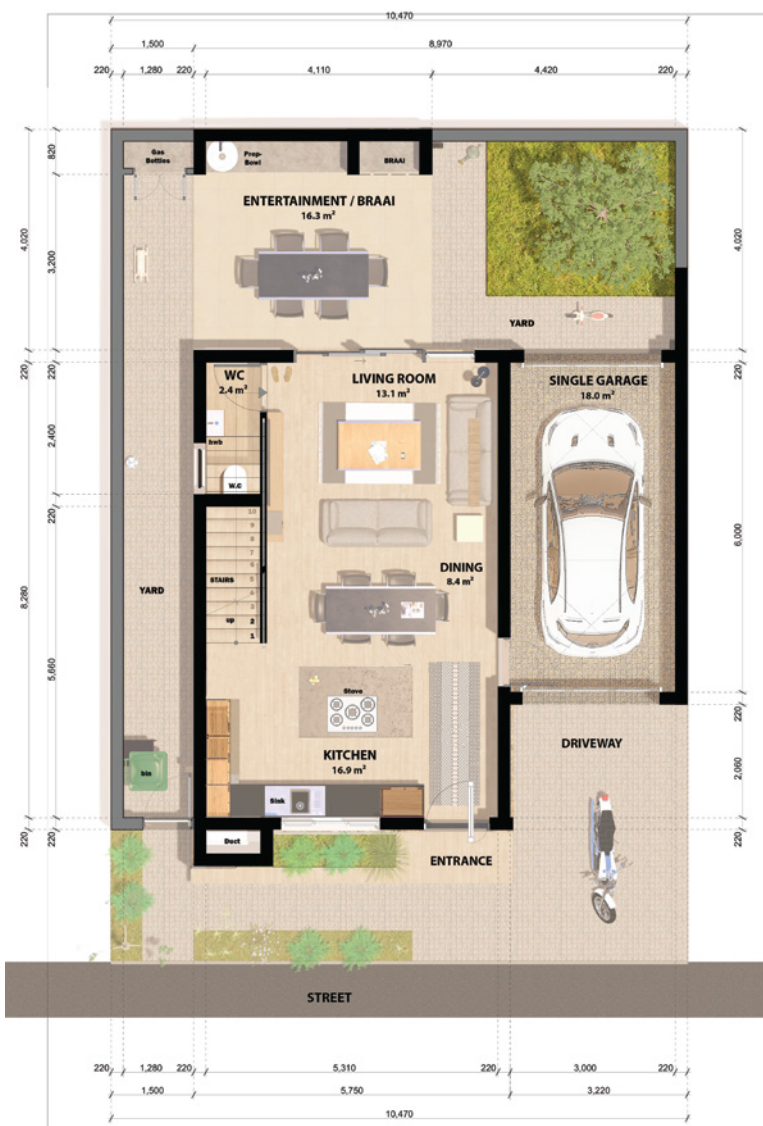
UNIT AREA CALCULATED

Ground Floor:	51.1m ²
First Floor:	65.8m ²
Garage:	22.09m ²
Entertainment:	17.59m ²
Total Footprint:	155.2m ²

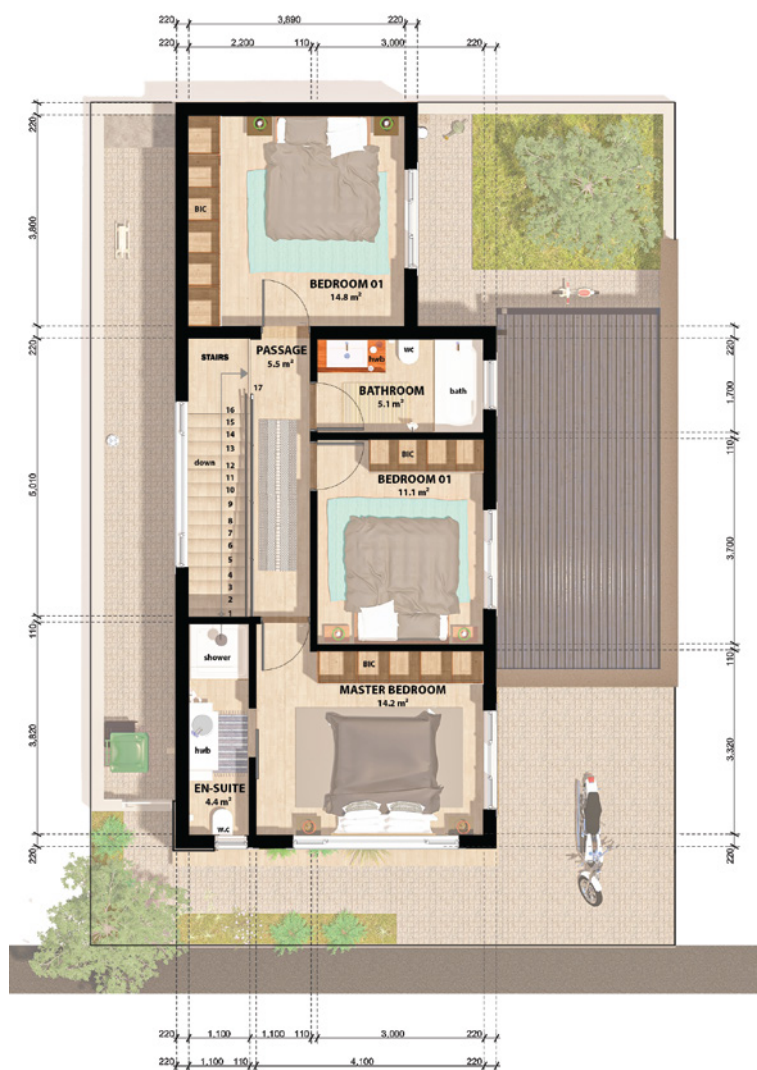
UNIT FINANCIAL INFO

Purchase Price:	N\$2,540,000
Interest Rate:	10.50%
Bond Payment (20yrs):	N\$25,359
Expected Levies:	N\$3,160

Expected Rental Income: N\$16,000



Ground Floor Plan



First Floor Plan



BLOSSOM (C-TYPE) 3 BEDROOM, 2 BATHROOM

A beautifully crafted home that offers the perfect balance of space and charm, ideal for those who love open, airy living.

FROM
N\$2,910,000



UNIT AREA CALCULATED

Ground Floor:	55.1m ²
First Floor:	72.3m ²
Garage:	40.06m ²
Entertainment:	19.48m ²
Total Footprint:	187.3m ²

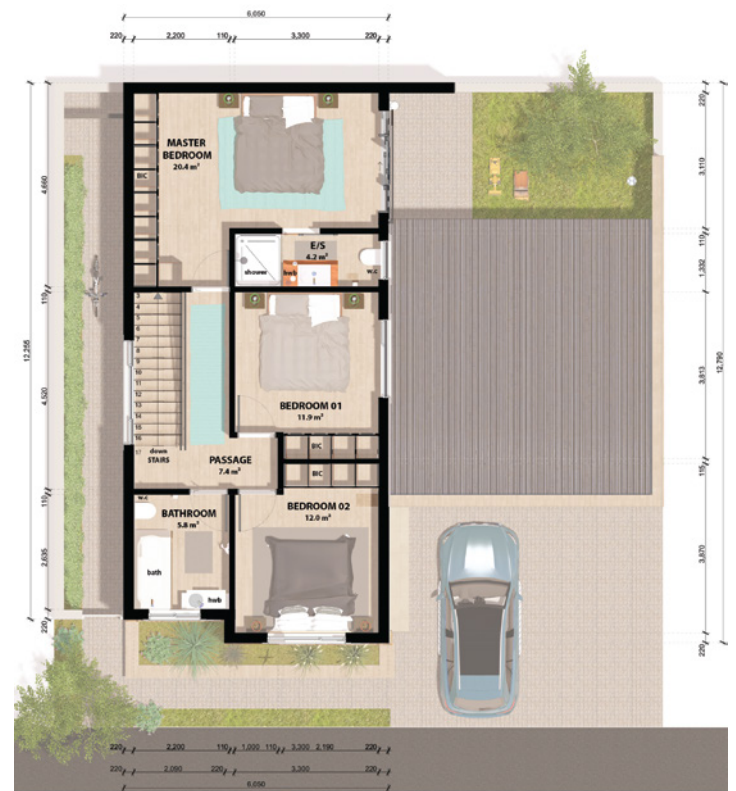
UNIT FINANCIAL INFO

Purchase Price:	N\$2,910,000
Interest Rate:	10,50%
Bond Payment (20yrs):	N\$29,053
Expected Levies:	N\$3,760

Expected Rental Income: N\$18,000



Ground Floor Plan



First Floor Plan



SOLACE (D-TYPE) 3 OR 4 BEDROOM, 3 BATHROOM

A peaceful retreat with generous living spaces, designed for relaxation and effortless family living.

FROM
N\$3,670,000



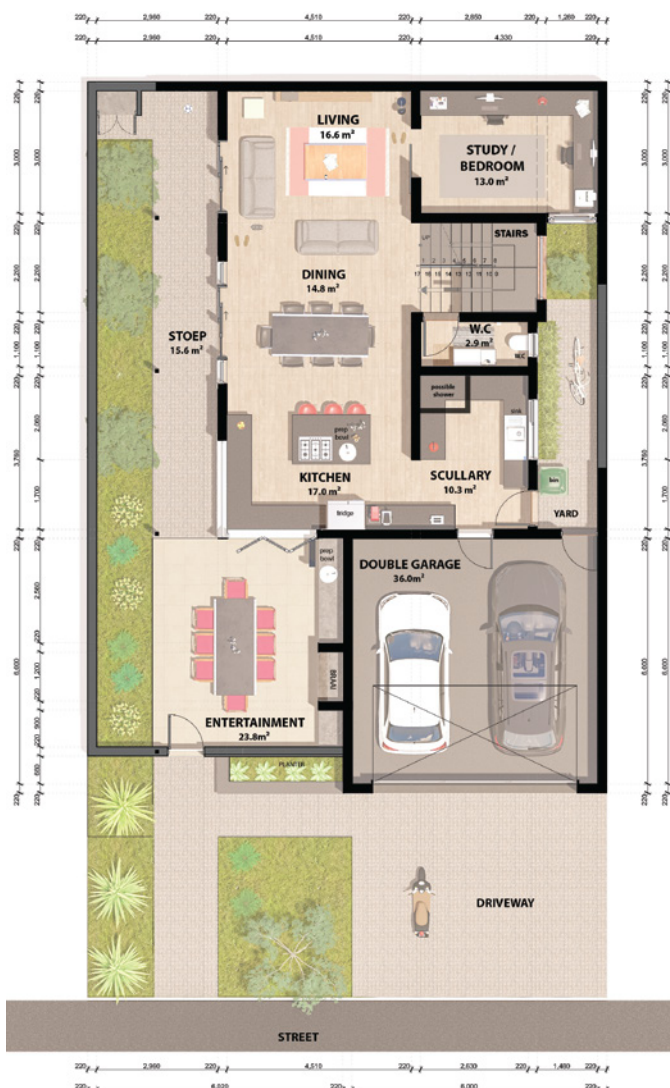
UNIT AREA CALCULATED

Ground Floor:	93.4m ²
First Floor:	81.3m ²
Garage:	40.43m ²
Entertainment:	23.8m ²
Total Footprint:	255.36m ²

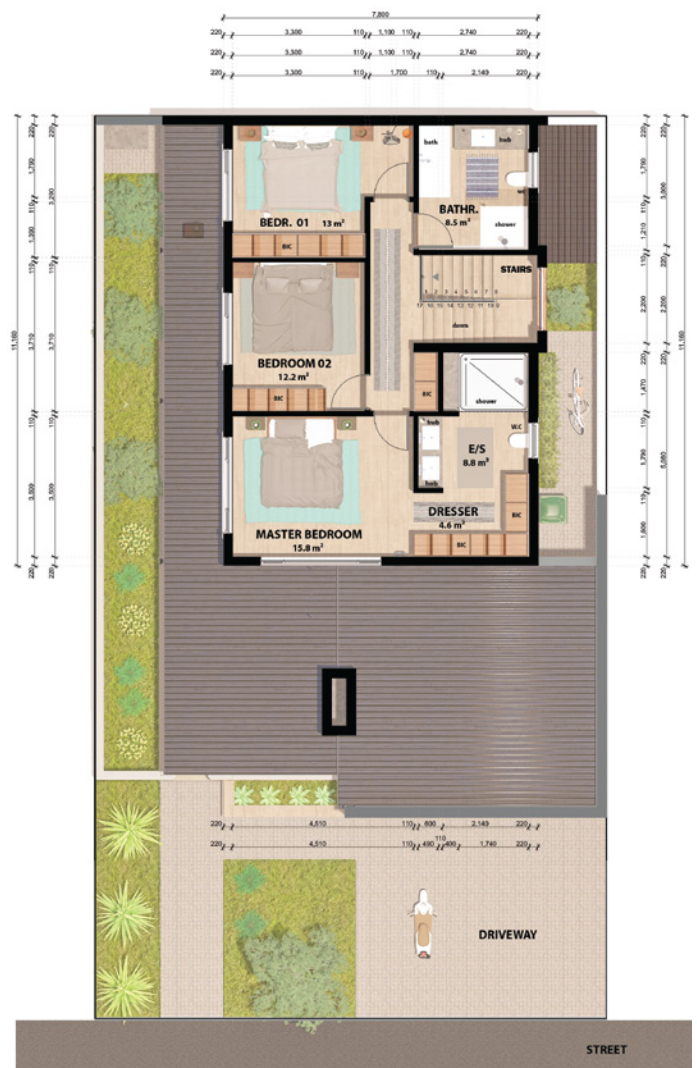
UNIT FINANCIAL INFO

Purchase Price:	N\$3,670,000
Interest Rate:	10.50%
Bond Payment (20yrs):	N\$36,641
Expected Levies:	N\$4,500

Expected Rental Income: N\$25,000



Ground Floor Plan



First Floor Plan



RETREAT

(E-TYPE) 3 BEDROOM, 2 BATHROOM

A thoughtfully designed haven that brings comfort and style together, perfect for those who crave a tranquil escape.

FROM

N\$2,900,000



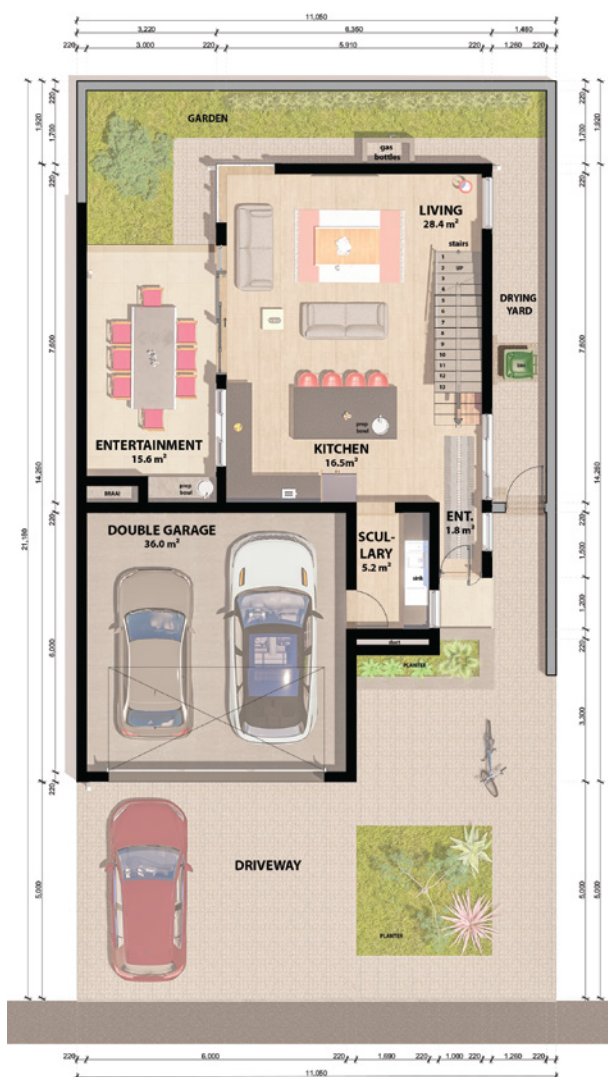
UNIT AREA CALCULATED

Ground Floor:	57.9m ²
First Floor:	66.5m ²
Garage:	41.47m ²
Entertainment:	18.69m ²
Total Footprint:	184.56m ²

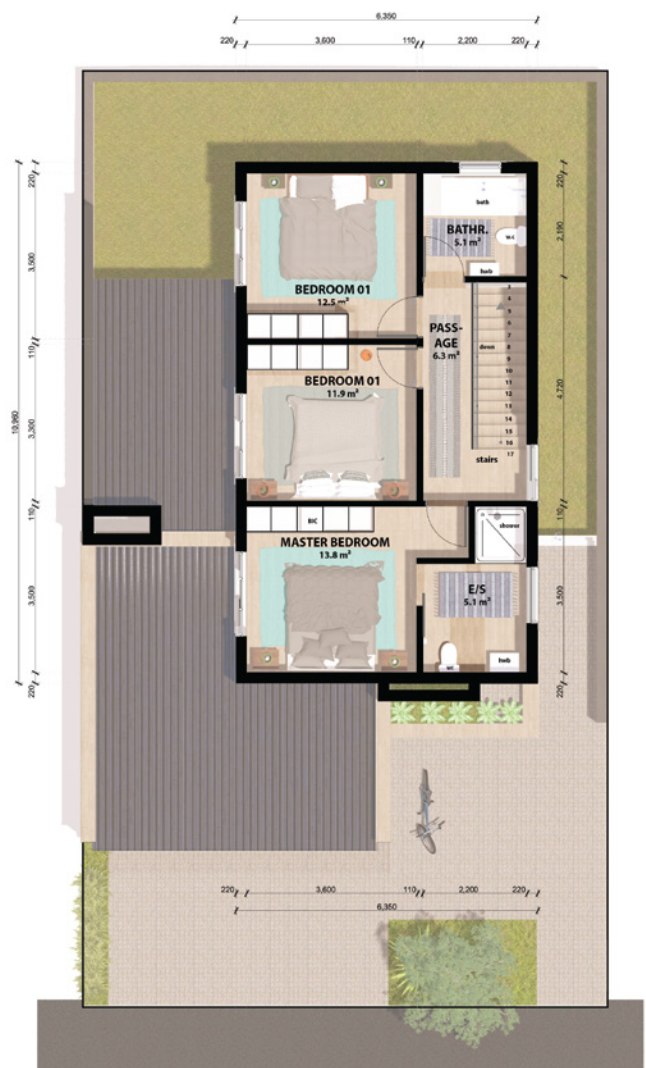
UNIT FINANCIAL INFO

Purchase Price:	N\$2,900,000
Interest Rate:	10,50%
Bond Payment (20yrs):	N\$28,953
Expected Levies:	N\$3,700

Expected Rental Income: N\$18,000



Ground Floor Plan



First Floor Plan



RIVERSTONE

(G-TYPE) 4 BEDROOM, 4 BATHROOM

A luxurious four-bedroom home with expansive interiors and a double garage, offering space, sophistication, and ultimate convenience.

FROM

N\$3,915,000



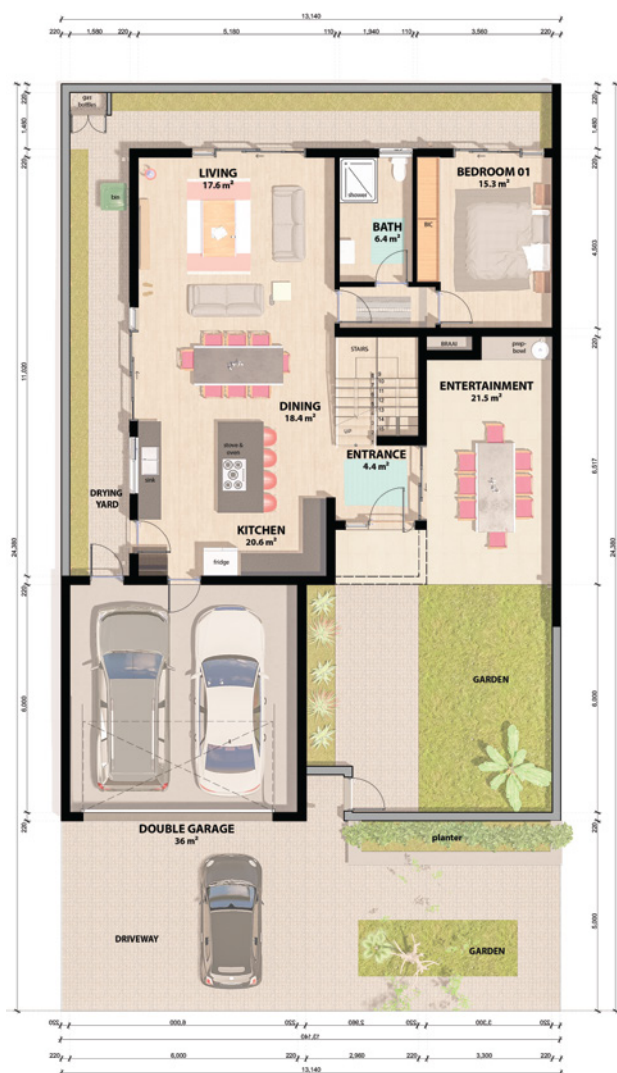
UNIT AREA CALCULATED

Ground Floor:	105.4m ²
First Floor:	89.6m ²
Garage:	40.45m ²
Entertainment:	26.3m ²
Total Footprint:	261.75m ²

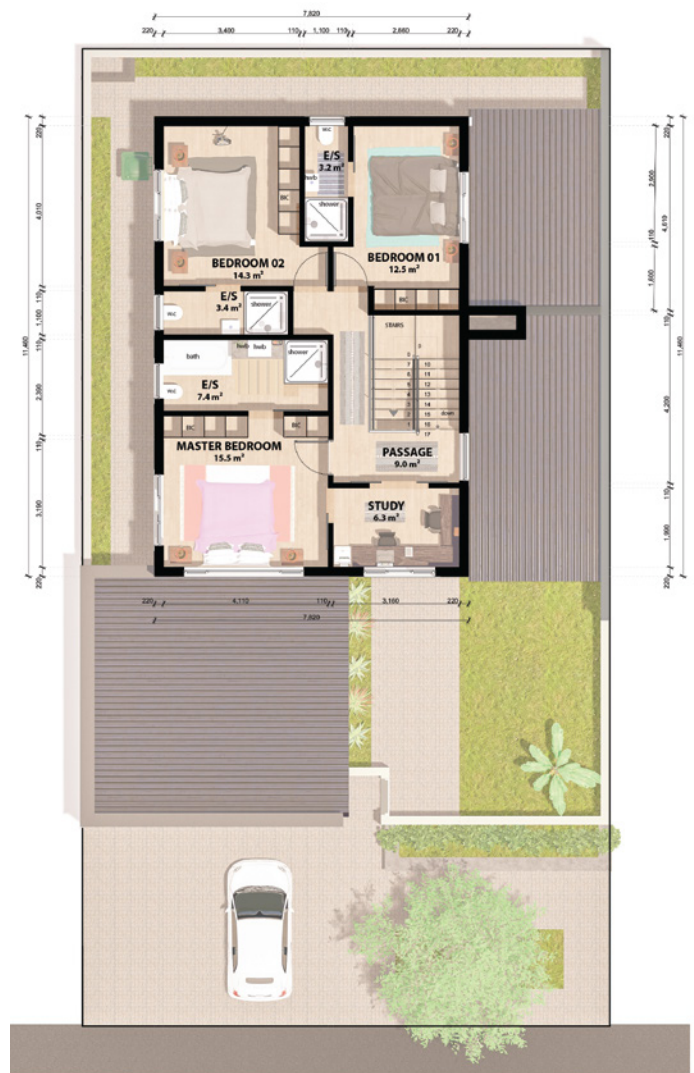
UNIT FINANCIAL INFO

Purchase Price:	N\$3,915,000
Interest Rate:	10,50%
Bond Payment (20yrs):	N\$39,087
Expected Levies:	N\$4,600

Expected Rental Income: N\$28,000



Ground Floor Plan



First Floor Plan





Mount Alpha, we've designed residences that don't just house families but nurture them.

Whether you're starting fresh, growing your family, or looking for a space that finally feels like yours, you'll find a home that fits your needs.





NEW LIVING
— REAL ESTATE —

CONTACT

Aliza

081 272 7380

Liza

081 170 1446

Juané

081 728 5707

Nadéne

081 694 8475

Contact us now to schedule a viewing.

liza@newliving.com.na



MOUNT ALPHA
RESIDENTIAL ESTATE

A Home That Elevates Your Lifestyle